

SanDisk®

Sansa® c200



User's Guide

Technical Support
U.S.: 1-866-SANDISK (726-3475)

Worldwide: www.sandisk.com/techsupport

Product Registration: available on enclosed CD

Table of Contents

Safety Instructions.....	4
Introduction	5
Package Contents	5
Minimum System Requirement	5
Getting Started.....	6
Main Menu Screen	7
Playback Screen	7
Li-ion Battery	8
Charging the battery over USB.....	8
Charging the battery with AC power adapter	8
How to replace the battery	8
Hold Switch.....	9
REC Button.....	9
Connecting to the computer.....	10
Sansa Media Converter	11
Transfer Photos	11
Delete Photos.....	12
Transfer Music.....	12
Delete Music Files	13
Synchronize Files.....	13
Safely Remove Sansa player from Computer	13
Basic usage	14
Power Button	14
Using Navigation Buttons	14
Music Mode	14
Music/Voice/FM Playback	14
Repeat Mode.....	15
Shuffle Mode.....	15
Music EQ.....	15
Add Song to Go List.....	16
Remove Song from Go List.....	16
Clear Go List	16
Photo Mode	16
View Photos	16
Slideshow	17
FM Radio Mode (if applicable)	17
FM Radio	17
FM Presets	17
Recording Mode.....	18
Voice Recording.....	18
Radio Broadcast Recording (if applicable)	18

Settings Mode	18
Equalizer	18
Power	18
Display	19
Language	19
FM Settings (if applicable)	19
Volume	19
System Info	19
Reset All	20
USB	20
Format	20
TIPS, FAQ, AND TROUBLESHOOTING	20
Service and Warranty Information	21
Getting Technical Support	21
Learn More	22
SanDisk Limited Warranty	22
User Notice	23
End-User License Agreement	23
FCC Regulation	26
Important – Safety Hearing Level Info	26

Safety Instructions

1. **Read the safety instructions carefully before using your Sansa.**
2. Read this entire manual to ensure proper usage.
3. Keep this User Guide for future reference.
4. Do not use Headphones/Earphones while driving, cycling, or operating any motorized vehicle. This may create a traffic hazard and may be illegal in some areas. It can also be dangerous to play your music with Headphones/Earphones at high volume while walking, or engaged in other activities. You should exercise extreme caution and discontinue use in potentially hazardous situations.
5. Avoid using Headphones/Earphones at high volume. Hearing expert's advice against continuous loud and extended music play. Keep the volume at a moderate level, so that you are better able to hear outside sound, and to be considerate of the people around you.
6. Keep your player away from sinks, drinks, bathtubs, showers, rain, and other sources of moisture. Moisture can cause electric shocks with any electronic device.
7. Follow these tips to keep your player working well for a long time:
 - Clean your player with a soft lint-free cloth used on glass lenses.
 - Do not allow young children to use your player unsupervised.
 - Never force any connector into the ports of your player or your computer. Make sure your connectors are the identical shape and size before you connect.
8. Do not dis-assemble, crush, short-circuit or incinerate the battery as it may cause fire, injury, burns or other hazards

Introduction

Congratulations on your purchase of a SanDisk Sansa c200 MP3 player. The SanDisk Sansa c200 is a high performance portable digital audio player with a photo browser, an FM radio and a voice recorder plus a micro SD slot. The Sansa c200 enables users to play MP3, WMA, and secure WMA audio files. It also shows photo files that are transferred to the player through Sansa Media Converter. You can listen to FM radio broadcast, record voice and record FM radio broadcast. Additionally, you can use the micro SD slot to expand your storage and/or move files via microSD™ cards.

Features

- Digital Audio Player – supports MP3, WAV, WMA, and secure WMA files playback.
- Color LCD
- Photo Browser – presents pictures and provides slideshow function.
- FM Radio – includes an integrated FM radio for listening to live-broadcast FM radio stations.
- Voice Recorder – supports voice recording function with built-in microphone.
- FM Radio Program Recording – supports FM radio recording function for later playback of radio music or radio program.
- Digital Equalizer – supports 5 equalizer types: Normal, Rock, Jazz, Classic, Pop, and one custom equalizer.
- Internal Memory – allows users to store data on the internal memory as an USB drive.
- microSD slot- allows users to expand memory capacity and read microSD cards.

Package Contents

Please unpack your Sansa c200 and check that the following were included.

- Sansa c200 digital audio player
- Earphones
- USB Cable
- CD with User's Manual and Software
- Quick Start Guide
- Lanyard
- 1 lithium ion battery

Minimum System Requirement

- Intel Pentium class PC or higher
- Windows XP SP2
- Windows Media Player v10
- CD-ROM drive
- USB 2.0 port required for hi-speed transfers

Getting Started



1 – Record

2 – Hold/Lock

3 – MIC

4 – Strap Eyelet

5 – Earphone Port

6 – microSD Card Slot

7 – Volume Up/Down

8 – Dock Connector Port

9 – Power/Menu

10 – Down/Option Menu

11 – Previous/Rewind

12 – Display Window

13 – Select Button

14 – Up/Play/Pause/Resume

15 – Next/Forward

Voice/FM Record Button

Factory set to locked position (shows Orange color). Slide to unlock controls. When locked all controls are disabled to prevent accidental activation of controls

Internal Microphone

Lanyard connection

Connect earphones here to listen to player

Insert microSD, or Gruvi content cards

To adjust the volume level

Plug the Dock Connector Cable here

Press and hold to power on or off; press to enter menu

Press to move to next item or to select Option Menu

Press for previous track or move left; press and hold for fast rewind

Display the status and information

Press to select the highlight item

Press to move up one item, pause playing track, or resume playing

Press for next track or to move right; press and hold to fast forward

Main Menu Screen



Music – browse and listen to music loaded in the internal library, microSD card, or recorded files



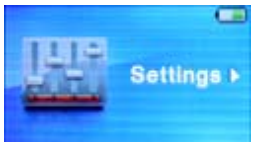
FM Radio – listen to FM broadcast radio (if applicable)



Voice – enter voice recording mode



Photo – view photos loaded in the library memory or microSD card



Settings – view or customize the Sansa c200 features

Playback Screen



1 – Submenu

Indicates that there is a Submenu available

2 – Shuffle

Indicates when the Shuffle function is enabled

3 – Repeat

Indicates when the Repeat function is enabled

4 – Track Number

Displays the current track number and the total number of tracks

5 – Battery

Indicates the battery status

6 – Track Length

Displays the elapsed time of currently playing track

7 – Progress Meter	Displays status of the currently playing track
8 – Play/Pause	To play, resume, or pause currently playing track
9 – Track Name	Displays name of currently playing track
10 – Album Name	Displays album name of the currently playing track
11 – Artist Name	Displays artist name of the currently playing track

Li-ion Battery

The Sansa c200 player comes with a replaceable and rechargeable lithium ion battery. Remember to fully charge the battery before using the device for the very first time. It takes approximately 3.5 hours to fully charge the battery. The battery can be charged through the USB port of the computer, the car adapter (not included) USB port, or the USB-AC adapter (not included) port.

Note:

- *Some low-power USB ports may not be able to provide enough charge power.*
- *The Li-ion rechargeable batteries may eventually need to be replaced as they have limited charge cycles.*
- *To purchase a replacement battery, visit your local retailer or www.sandisk.com*

Charging the battery over USB

- 1) Connect the larger end of the USB cable into the dock connector of the Sansa player
- 2) Connect the smaller end of the USB cable to an available USB port on the computer
- 3) Sansa c200 display screen will say **Connected**



- 4) To stop recharging, disconnect the cable.

Note: The computer must be on for most USB ports to charge your battery.

Charging the battery with AC power adapter

- 1) Connect the larger end of the USB cable into the dock connector of the Sansa player
- 2) Connect the smaller end of the USB cable to an available USB port on the AC-USB adapter
- 3) Plug the AC-USB charger into a power source
- 4) To stop recharging, disconnect the cable

How to replace the battery

- 1) Press in on the tab of the battery compartment cover on the back of Sansa c200 player to remove it

Press in and slide RIGHT to remove cover.



- 2) Remove the existing battery by lifting the battery removal tab up



- 3) Orient and insert the new battery according to the battery icon with the pins inside the compartment
- 4) Press down the battery removal tab



- 5) Put back the battery compartment cover and slide to the left to lock

Slide battery cover LEFT to lock.



Hold Switch

The **Hold** Switch is located on the side of the device, and is used to prevent any accidental operation. Once the **Hold** Switch is moved to the lock position, all function keys will be disabled. The buttons on the Sansa c200 player will not operate when the **Hold** Switch is active (Orange Color visible).



Unlocked position

REC Button

The Sansa c200 **Record** button is located on the front side panel of the device and is used to launch the recording feature. Press button down for 2 seconds and release to activate voice recording. Press the Play/Pause

(>||) button to start recording. See [Recording Mode](#) for details.

Connecting to the computer

Both MTP (Media Transfer Protocol) and MSC (Mass Storage Class) protocols are supported. From the Sansa c200's Main Menu, go to **Settings/USB/Auto Detect** or **MSC** to change the mode. Auto Detect settings will default to MTP mode.

- 1) Connect the larger end of the USB cable into the dock connector of the Sansa player
- 2) Connect the smaller end of the USB cable to an available USB port on the computer
- 3) Once connected to computer:
 - a. The Sansa c200 player display screen should say **Connected**
 - b. The computer's Operating System will detect the player automatically and prompt user to choose one of the following options.

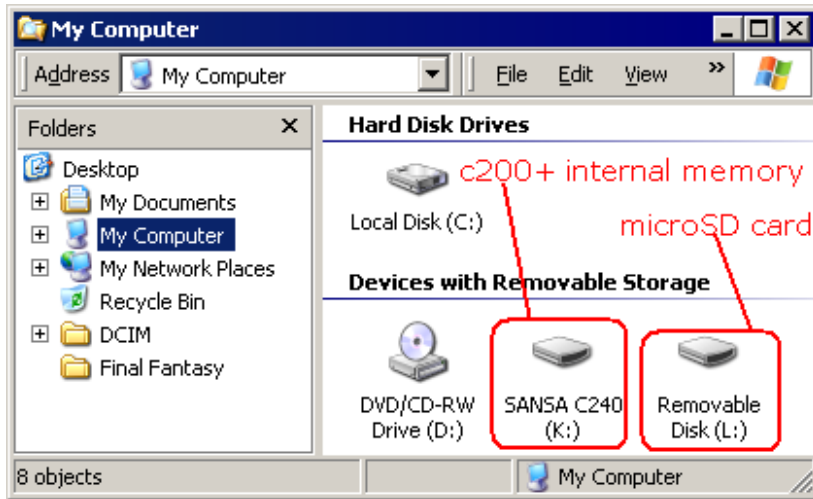
In **Auto Detect (MTP)** mode, the player will appear as Sansa c200 Portable Media Player in **My Computer**.



Double-click on **Internal Memory** icon to access the internal memory or the **Expansion Card** to access the microSD card. MTP is needed when using your device with monthly music subscription services such as Rhapsody, Napster, and Yahoo! Music.

Note: The Expansion Card will appear only when a microSD card is inserted.

In **MSC** mode, the Sansa c200 player will appear under **My Computer** as **Removable Drives**. One drive letter is for the Sansa player. Another drive letter is for the microSD card. The Sansa c200 can be used as another removable player to transfer files to and from the computer.



Sansa Media Converter

You will need to use Sansa Media Converter to transfer photos to your Sansa c200. Insert your SanDisk CD and select Sansa Media Converter to install it to your PC. Then you can load your personal photos onto your Sansa c200 player by using the Sansa Media Converter.

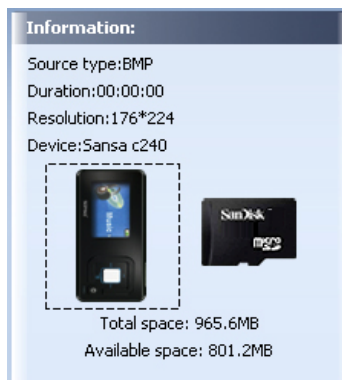
Supported IMPORT Media Types:


Still Image Files: JPEG, TIFF, PNG, BMP, GIF.

Transfer Photos

To transfer photos to your Sansa c200 player, please execute the following instructions:


- 1) Connect the player to a computer using the provided USB Sansa cable
- 2) Select **Sansa Media Converter using Sansa Media**.
The software will list the total and available space of the detected device. If more than 1 device is inserted, only the first device will be supported.



- 3) Click  to select files to be converted
- 4) Sansa Media Converter will place all files in **My Album** by default.
 - a. To place converted files in a different folder, highlight My Album

Album Name:

then type in a new Album Name at the bottom of the screen.

- 5) Click on the **Sansa c200** device from the information pane
- 6) Select the Click  to start the conversion process. A status box will appear showing which files are being converted.



- Do not move your photo or video files from the location the Sansa Media Converter places them.

Delete Photos

The photos are stored in your Sansa...My Album. The instructions below for deleting photos from your player were created using Windows XP with Windows Media Player 11.

- 1) Connect your Sansa c200 player to your computer
- 2) Select **Open device to view files using Windows Explorer** on initial connection
- 3) Double-click the drive containing your photos
- 4) Double-click on the **Photo** folder.
- 5) Highlight and delete the photos stored in **My Computer\Sansa c200\...\Photo\My Album**

Transfer Music

To transfer music to your Sansa player, please execute the following steps:

- 1) Connect your player to your computer
- 2) Select **Open device to view files using Windows Explorer** on initial connection
- 3) Double-click on drive that you want to transfer music to
- 4) Double-click on the **Music** Folder
- 5) Drag and drop music files from your computer to **My Computer\Sansa c200\...\MUSIC**.

(You can also select from a variety of music software to transfer or synchronize files).

- For correct Album Work functionality, the art and associated music file may need to be located in the same folder.
- In MTP mode, as long as the files are WMA or MP3, they can be dragged

into the Media folder. Otherwise, they can be dragged into the Data folder (these files will not appear on the player).

- In MSC mode, files/folders can be dragged/copied to the device. Drag and drop will work with non-DRM content only.

Delete Music Files

When your player is connected to your computer, you can use your operating system file browser to view and files on your player.

- 1) Connect your Sansa player to the computer.
- 2) Select **Open device to view files using Windows Explorer** on initial connection.
- 3) Select the place where you want to delete music files from
- 4) Highlight and delete the music file/s or folder from **My Computer\Sansa c200\...\MUSIC** folder.

Synchronize Files

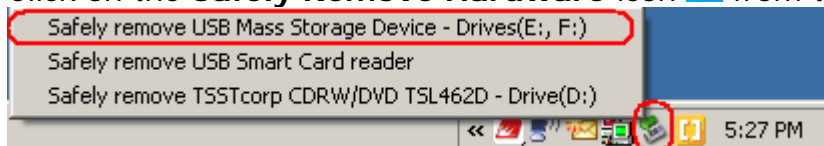
Various software packages are available to synchronize songs onto your device. Please refer to the specific software package instructions.

Safely Remove Sansa player from Computer

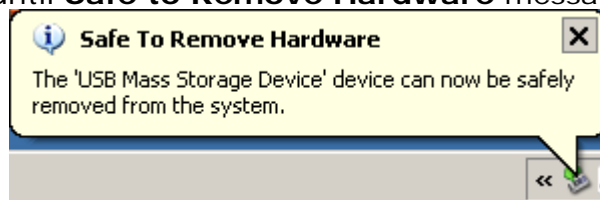
Simply disconnect the Sansa USB cable from the Sansa c200 player after you have completed charging, transferring, firmware upgrading, or synchronizing files when you are using **MTP** mode.

To safely remove the Sansa player from the computer in **MSC** mode, please execute the following steps:

- 1) Click on the **Safely Remove Hardware** icon  from the system tray.



- 2) Click on the hardware you'd like to remove.
- 3) Wait until **Safe to Remove Hardware** message is displayed.



- 4) You can now disconnect the Sansa player from the computer.

WARNING: Do not disconnect the player while it's transferring data.

Disconnecting the Sansa device from the computer while data is being transferred can damage the device.

Basic usage

Power Button



For initial power up, you must unlock the control buttons by moving the **HOLD** switch to the un-lock position (no orange color visible). Press the **Power Button** once to **turn on** the Sansa c200 player. The LCD will light up with the SanDisk screensaver.



To **turn off** the Sansa c200 player, press and hold the **Power Button** for approximately 2 seconds or until the display screen is turned off.



Move the **HOLD** switch to the locked position after the player is turned off to prevent accidental power on.

Using Navigation Buttons

Use Navigation Buttons as described in the [Getting Started](#) section, to navigate through the menus, play music, listen to FM radio (if applicable), record voice or FM radio, and browse or view photos.

Music Mode

Music/Voice/FM Playback

To listen to music, recorded Voice or FM radio stored on the Sansa c200 player, please execute the following instructions:

- 1) Press the **Menu** button then select **Music**.
 - FM Radio and Voice files are located under **Recordings**
- 2) Select **Play All** (to play all music files), **Artists**, **Albums**, **Songs**, **Genres**, **Playlists**, **Recordings** (FM/Voice), or **Music Options**, from the Music Menu.
 - Music will start automatically once **Play All** has been selected

- 3) Browse through the menu selections, highlight the desired track or file, and press **Select** button to play.
- 4) Press the **Right** (>>|) button to skip to the next song
 - Press and hold the **Right** (>>|) to fast forward.
- 5) Press the **Left** (|<<) button to go back to the beginning of the song
 - Press the **Left** (|<<) button twice to go back to the previous song
 - Press and hold the **Left** (|<<) button to fast rewind.
- 6) Press the **Select** (Center) button to display the current track's album art (if available)

Repeat Mode

- 1) In playback mode, press the **Submenu** (Down) button to enter Music Option.
- 2) Press the **Down** button to highlight **Repeat**.
- 3) Press the **Select** or **Right** (>>|) button to choose a repeat mode:
 - Off: No repeat of tracks
 - Song: Repeat the current track
 - All: Repeat all selected tracks
- 4) Press **Left** (|<<) button to return to the Music Playback screen.

Shuffle Mode

- 1) In playback mode, press the **Submenu** (Down) button to enter Music Option.
- 2) Press the **Down** button to highlight **Shuffle**.
- 3) Press the **Select** or **Right** (>>|) button to toggle between shuffle on and shuffle off (Set the shuffle to On to play songs in the random order)
- 4) Press **Left** (|<<) button to return to the Music Playback screen.

Music EQ

Sansa c200 player provides various equalizer types: Normal, Rock, Pop, Jazz, Classic, and Custom for users to choose to meet their personal need or habit.

- 1) In playback mode, press **Submenu** (Down) button to enter Music Option.
- 2) Press the **Down** button to highlight and select **Music EQ**.
- 3) Press the **Up** (>|) or **Down** (Submenu) button to select the equalizer type desired then press the **Select** or **Right** (>>|) button to choose.
- 4) For **Custom EQ**, press the **Up** (>|) or **Down** (Submenu) button to adjust parameters of one equalizer band, then use the **Right** (>>|) or **Left** (|<<) button to switch between each equalizer band.
 - a. Press the **Select** button to save the customer EQ settings
 - b. Press the **Left** (|<<) button to return to Music Option Menu.
- 5) Press **Left** (|<<) button to return to the Music Playback screen.

Add Song to Go List

- 1) In playback mode, press the **Submenu** (Down) button to enter Music Option
- 2) Press the **Down** (submenu) button to highlight and select **Add Song to GoList**.
- 3) Press **Left** (|<<) button to return to the Music Playback screen.

Remove Song from Go List

- 1) Play a song from the Go List.
 - Select **Music** from the Main Menu
 - Select **Playlists**
 - Select **GoList**
 - Select a song to play
- 2) Press the **Submenu** (Down) button to enter Music Option.
- 3) Press the **Down** (submenu) button to highlight and select **Remove Song from GoList**.

Note:

- *The **Remove Song from GoList** option is available if the current song had already been added to the GoList.*
 - *Removing a song from the GoList does not delete the actual song from the player. It only removes it from the list.*
- 4) Press **Left** (|<<) button to return to the Music Playback screen.

Clear Go List

- 1) In playback mode, press the **Submenu** (Down) button to enter Music Option.
- 2) Press the **Down** (Submenu) button to highlight and select **Clear GoList**.
- 3) Select **Yes** to clear the list
- 4) Press **Left** (|<<) button to return to the Music Playback screen.

Photo Mode

View Photos

To view photos stored in your Sansa player, please execute the following instructions.

- 1) Press the **Menu** button and select **Photo** from the Main Menu.
- 2) Select **View All**
- 3) Select a photo album to view
- 4) Select a photo to view
- 5) Press the **Right** (>>|) button to view the next image or **Left** (|<<) button to view the previous image.
- 6) Press the **Menu** button to exit photo viewing

Slideshow

To play slideshow, please execute the following instructions:

- 1) Press the **Menu** button and select **Photo** from the Main Menu
- 2) Select **Start Slide Show**.
- 3) Press the **>||** button to pause or resume the slide show.
- 4) Press the **Submenu (Down)** button then select **Photo Options** to change the slideshow options:
 - a. Highlight **Random** and press the **Select** or **Right (>>|)** button to select Random **On** or **Off**.
 - b. Highlight **Loop** and press the **Select** or **Right (>>|)** button to select Loop **On** or **Off**.
 - c. Highlight **Duration** and press the **Select** or **Right (>>|)** button to choose duration time (2 seconds, 5 seconds, or 10 seconds) for each slide.
- 5) Press the **Left (|<<)** button to return to the Photo menu.

FM Radio Mode (if applicable)

FM Radio

- 1) To listen to radio broadcast, select **FM Radio** from the Main Menu.
- 2) When the radio frequency appears on the screen, press the **Right (>>|)** or **Left (|<<)** button to search the frequency you want.
- 3) Press and hold the **Left (<<)** or **Right (>>)** button to scan for Radio stations.

FM Presets

- 1) To program the preset Radio stations, press the **Submenu (Down)** button in Radio mode.
- 2) Select **Add this Preset** to save the current frequency into presets.
- 3) Select **Delete a Preset** to remove the current frequency from the presets.
- 4) Select the **View All Presets** to view all preset frequencies.
 - a. Select **Auto-scan for Presets** to allow the Sansa to automatically scan and store all available FM radio stations to preset

Note:

- *This action will erase all the presets you have set previously*
 - *You can store up to 20 radio preset stations.*
- b. Press the **Left (|<<)** button to return to the Radio Options.
- 5) Press the **Left (|<<)** button to return to the Radio playback menu.

Recording Mode

Voice Recording

The Sansa player has a built-in microphone allowing you to record your voice, an interview or a speech. You can also record FM radio broadcast. The recorded audio files will be saved in the **RECORD** folder. To use the voice recording function, please execute the following instructions.

- 1) Press the **Menu** button to return to the Main Menu.
- 2) Press the **REC** button at the side of the Sansa c200 player for approximately 2 seconds.
 - a. Or, select **Voice** from the Main Menu.
- 3) A Record screen will appear. Press the **Play/Pause (> ||)** button to begin recording
 - a. To pause the recording, press the **Play/Pause (> ||)** button
 - b. To resume recording, press **Play/Pause (> ||)** again
 - c. To stop the recording, press the **Select** button
 - d. A confirmation message will appear on the screen. Select **Yes** to save the recording.
- 4) Select the **Menu** button to return to Main Menu.

Radio Broadcast Recording (if applicable)

- 1) Select **FM Radio** from the Main Menu
- 2) Select a radio broadcast station that you want to record.
- 3) Press and hold the **REC** button on the Sansa c200 player for approximately 2 seconds. The recording will start right away.
 - a. Or, press the **Submenu** button and select **Record Now**
- 4) Press the **Left (<<)** or **Right (>>)** button to select recording duration.
 - a. To pause the recording, press the **Play/Pause (> ||)** button
 - b. To resume the recording, press the **Play/Pause (> ||)** button again
 - c. To stop the recording, press the **Select** button
 - d. A confirmation message will appear on the screen. Select **Yes** to save the recording.
- 5) Select the **Menu** button to return to Main Menu.

Settings Mode

You can personalize your Sansa c200 player's settings to suit your needs.

Equalizer

Equalizer can be set in the same manner as Music Option. The **Equalizer options** are: Normal, Rock, Pop, Jazz, Classical, and Custom.

Power

You can set the timer under Auto Power Off setting to turn off the Sansa

c200 player automatically when it is playing or recording for a certain time. **Auto Power options:** Off, 1 minute, 5 minutes, 10 minutes, 20 minutes, 30 minutes, and 60 minutes. **Sleep options:** Off, 10 minutes, 20 minutes, 30 minutes, 45 minutes, 60 minutes, 90 minutes, and 120 minutes.

- 1) Select **Settings** from the Main Menu.
- 2) Select **Power**.
- 3) Select **Auto Power Off** or **Sleep**
- 4) Select the setting you want.
- 5) Press **Select** to save the setting.

Display

Adjust display brightness for better viewing in different lighting environments. **Backlight option:** 5 seconds, 10 seconds, 15 seconds, 30 seconds, 45 seconds, 60 seconds, 90 seconds, and always ON.

- 1) Select **Settings** from the Main Menu.
- 2) Select **Display**
- 3) Select **Backlight** or **Brightness**
- 4) Press the **Left** (<<) or **Right** (>>) button to set the brightness or backlight level.
- 5) Press **Select** save the setting.

Language

Select a language.

- 1) Select **Settings** from the Main Menu.
- 2) Select **Language**
- 3) Select a language you want to use.

FM Settings (if applicable)

FM Region options: USA, Japan, and World. **FM Mode options:** Stereo and Mono.

- 1) Select **Settings** from the Main Menu.
- 2) Select **FM Settings**
- 3) Select **FM Region** or **FM Mode**
- 4) Select the setting you want.

Volume

- 1) Select **Settings** from the Main Menu.
- 2) Select **Volume**
- 3) Select **Normal** or **High**

System Info

This display the information on your Sansa c200 player such as the Firmware revision, total memory, available memory, total songs, total Voice and FM recordings.

- 1) Select **Settings** from the Main Menu.
- 2) Select **System Info**
- 3) You can read device information on the display screen.

Reset All

This allows you to reset your Sansa c200 player to the factory settings.

- 1) Select **Settings** from the Main Menu.
- 2) Select **Reset All**
- 3) Select **Yes** to reset to factory settings or **No** to cancel.

USB

This allows you to change the USB mode of the Sansa c200 player.

- 1) Select **Settings** from the Main Menu.
- 2) Select **USB**.
- 3) Choose **Auto Detect** or **MSC**.

Format

This will format your Sansa c200 player's internal memory

- 1) Select **Settings** from the Main Menu.
- 2) Select **Format**
- 3) Select **Yes** to format the internal memory or **No** to cancel.

TIPS, FAQ, AND TROUBLESHOOTING

This chapter provides answers to common questions you may have.

Question: How do I copy files to the Sansa MP3 Player?

Answer: Sansa MP3 player will automatically detect and connect to MTP or MSC mode which is supported by your PC. If Sansa MP3 player is connected to PC, copying files to the Sansa c200 is just like copying files to a Hard Drive.

Question: What file formats does the Sansa c200 support?

Answer: The Sansa MP3 Player will support MP3, WAV, WMA, and secure WMA.

Question: What is MTP?

Answer: Media Transfer Protocol (MTP) is a new protocol and accompanying set of drivers developed by Microsoft to connect portable devices to a Windows XP PC and synchronize digital media content between those devices and the PC.

Question: Some of my music files are on my player, but cannot be played. When I select them, another song begins to play. What is wrong?

Answer: You may not have purchased the rights to play the song on an additional device. To test this, try to play a song that you have copied from an older CD and converted to MP3 format. If you can play that song, but not the song that will not play, then you need to purchase the rights to play the song.

Question: Why should I update the firmware?

Answer: You should always update the player to the latest firmware to ensure that it functions correctly and has all the latest features.

Question: How do I copy a CD to player?

Answer: First you must rip the CD using a program such as Windows Media Player. Once the songs are on your computer, simply copy and paste the songs to the player or use WMP to Sync the songs.

Question: How can I use non-supported file types with my mp3 player?

Answer: First you must convert the songs to a supported format. Then you can transfer the songs to the player as normal, either by copying and pasting, or transferring.

Question: In MTP mode, how do I drag files to the player?

Answer: As long as the files are wma, wav, or mp3, they can be dragged into the Media folder. Otherwise, they can be dragged into the Data folder (these files will not appear on the player).

Question: Is the player compatible with podcasts?

Answer: As long as the podcasts are in mp3 format and an appropriate bit rate (32-320 kbps), then the player should be capable of playing the files.

Service and Warranty Information

This chapter provides information about how to get support for your player and the terms of your warranty.

Getting Technical Support

Before you contact Technical Support, we encourage you to read the **Tips, FAQ, and Troubleshooting** section.

If you have questions about the use or features of your player, please call the SanDisk Technical Support Center at 1-866-SanDisk (1-866-726-3475), or fill out an on-line support request at <http://www.sandisk.com/techsupport>.

If you have questions about our partner services, please call their Technical Support Center.

When you call or contact us for support, please include as much information as you can from your packaging material. This will allow us to help you more quickly.

Learn More

You also can visit us on the web at <http://www.sandisk.com> to learn more about your player as well as other SanDisk products.

SanDisk Limited Warranty

SanDisk warrants that this product will be free from material defects in design and manufacture and will substantially conform to the published specifications under normal use for one year from your date of purchase, subject to the conditions below. This warranty is provided to the original end user purchasing from SanDisk or an authorized reseller, and is not transferable. Proof of purchase may be required. SanDisk is not responsible for any failure or defect caused by any third party product or component, whether authorized or not. This warranty does not apply to any third party software provided with the product and you are responsible for all service and repair needed for such software. This warranty is void if the product is not used in accordance with the product instructions, or if it is damaged as a result of improper installation, misuse, unauthorized repair, modification or accident.

To obtain warranty service contact SanDisk at 1-866-SanDisk or send an email to: support@SanDisk.com. You must return the product in tamper resistant packaging, freight prepaid, as instructed by SanDisk. You must obtain a tracking confirmation number, which you may be required to provide to SanDisk. SanDisk will, at its option, repair or replace the product with new or refurbished product of equal or greater capacity and functionality, or refund the purchase price. The warranty duration on replaced product will be that time period remaining on the original product. THIS CONSTITUTES SANDISK'S ENTIRE LIABILITY AND YOUR EXCLUSIVE REMEDY FOR BREACH OF THIS WARRANTY.

SanDisk does not warrant, and shall not be responsible for, any lost data or information contained in any product (including in any returned product), regardless of the cause of the loss. SanDisk's products are not warranted to operate without failure. SanDisk products should not be used in life support systems or other applications where failure could threaten injury or life. This warranty gives you specific legal rights, and you may also have other rights which vary by jurisdiction.

THE FOREGOING IS SANDISK'S SOLE WARRANTY. SANDISK DISCLAIMS ALL OTHER EXPRESS AND IMPLIED WARRANTIES TO THE FULLEST EXTENT PERMITTED BY APPLICABLE LAW. THE IMPLIED WARRANTIES OF MERCHANTABILITY AND FITNESS FOR A PARTICULAR PURPOSE ARE LIMITED TO THE DURATION OF THE EXPRESS WARRANTY. SOME JURISDICTIONS DO NOT ALLOW LIMITATION ON HOW LONG AN IMPLIED WARRANTY LASTS, SO THE ABOVE LIMITATION MAY NOT APPLY TO YOU. IN NO EVENT SHALL SANDISK OR

ANY AFFILIATED OR SUBSIDIARY COMPANY BE LIABLE UNDER ANY CIRCUMSTANCES FOR ANY DIRECT, INDIRECT, OR CONSEQUENTIAL DAMAGES, ANY FINANCIAL LOSS OR ANY LOST DATA OR IMAGE, EVEN IF SANDISK HAS BEEN ADVISED OF THE POSSIBILITY OF SUCH DAMAGE. SOME JURISDICTIONS DO NOT ALLOW THE EXCLUSION OR LIMITATION OF INCIDENTAL OR CONSEQUENTIAL DAMAGES, SO THE ABOVE LIMITATION OR EXCLUSION MAY NOT APPLY TO YOU. IN NO EVENT WILL SANDISK'S LIABILITY EXCEED THE AMOUNT PAID BY YOU FOR THE PRODUCT.

SanDisk, the SanDisk logo, Store Your World in Ours, and Sansa are trademarks of SanDisk Corporation, registered in the United States and other countries. TrustedFlash, and gruvi are trademarks of SanDisk Corporation. Other brand names mentioned herein are for identification purposes only and may be trademarks of their respective holder(s).

© 2007 SanDisk Corporation. All rights reserved.
Made in China

User Notice

This product is protected by certain intellectual property rights of Microsoft Corporation. Use or distribution of such technology outside of this product is prohibited without a license from Microsoft or an authorized Microsoft subsidiary.

Content providers are using the digital rights management technology for Windows Media contained in this device ("WM-DRM") to protect the integrity of their content ("Secure Content") so that their intellectual property, including copyright, in such content is not misappropriated. This device uses WM-DRM software to play Secure Content ("WM-DRM Software"). If the security of the WM-DRM Software in this device has been compromised, owners of Secure Content ("Secure Content Owners") may request that Microsoft revoke the WM-DRM Software's rights to acquire new licenses to copy, display and/or play Secure Content. Revocation does not alter the WM-DRM Software's ability to play unprotected content. A list of revoked WM-DRM Software is sent to your device whenever you download a license for Secure Content from the Internet or from a PC. Microsoft, may, in conjunction with such license, also download revocation lists onto your device on behalf of Secure Content Owners.

End-User License Agreement

SANDISK CORPORATION
END USER LICENSE AGREEMENT

DO NOT USE OR LOAD THIS SOFTWARE until you carefully read the following terms and conditions. The firmware, computer programs, device drivers, data or information ("Software") distributed or bundled with the product is provided to you under the terms and conditions of this End User License Agreement, and

may be subject to additional terms and conditions in an agreement between you and SanDisk's third party licensors. By downloading, installing or using the accompanying Software, you agree to all of the terms of this End User License Agreement between SanDisk Corporation ("SanDisk," "we," or "us") and each person who downloads, installs or uses the Software ("you" or "your"). The Software is owned by SanDisk or by others including Portal Player Inc. ("Licensors") who permit SanDisk to distribute their Software. If you do not agree to the following terms and conditions, do not install or use the Software. The Software is protected by copyright laws and international copyright treaties, as well as other intellectual property laws and treaties.

Software License. Subject to the terms and conditions contained herein, SanDisk grants to you a limited, non-exclusive, non-sub licensable, transferable in accordance with these terms, royalty-free right and license under SanDisk's intellectual property rights to use the Software in executable form for SanDisk products and services solely for your personal use on a single computer (the "License"). For each Software licensee, the Software can be "in use" on only one computer or hardware device at any given time. The Software is "in use" when it is either downloaded, copied, loaded into RAM or installed into the hard disk or other permanent memory of a computer or other hardware device. SanDisk and its Licensors retain all right, title and interest in and to the Software.

Restrictions. SanDisk or its Licensors retain all rights in the Software not expressly licensed to you. You may not modify, create derivative works (new versions) of, adapt or translate the Software. No source code is provided under this Agreement. You may not reverse engineer, disassemble, decompile, rent, or lease the Software, or re-create or discover the source code version of the Software. The Software contains proprietary and confidential information of SanDisk or its Licensors, which you agree not to discover or reveal to others. Any and all permitted copies of the Software that you make or distribute must be unmodified, must contain all of the original Software's proprietary notices, and must include or be accompanied by this Agreement. You may not separate the Software into component parts for sublicense, distribution or transfer to a third party. You may not embed the Software within any other software product or modify the Software in whole or in part in any manner.

DISCLAIMER OF WARRANTIES. TO THE MAXIMUM EXTENT PERMITTED BY APPLICABLE LAW, THE SOFTWARE IS PROVIDED "AS IS" AND "AS AVAILABLE" WITH NO WARRANTIES. NEITHER SANDISK NOR ITS LICENSORS MAKE ANY REPRESENTATION OR WARRANTY, STATUTORY OR OTHERWISE, IN LAW OR FROM THE COURSE OF DEALING OR USAGE OF TRADE, EXPRESS OR IMPLIED, INCLUDING WITHOUT LIMITATION ANY WARRANTIES OF MERCHANTABILITY, FITNESS FOR A PARTICULAR PURPOSE, NON-INTERFERENCE, OR NON-INFRINGEMENT OF ANY THIRD PARTY INTELLECTUAL PROPERTY RIGHTS, OR EQUIVALENTS UNDER THE LAWS OF ANY JURISDICTION. YOU ASSUME THE ENTIRE RISK AS TO THE QUALITY AND PERFORMANCE OF THE SOFTWARE. SHOULD THE SOFTWARE PROVE DEFECTIVE, YOU, AND NOT SANDISK, ITS LICENSORS OR RESELLERS, ASSUME THE ENTIRE COST OF NECESSARY SERVICING, REPAIR, OR CORRECTION.

LIMITATION OF LIABILITY. IN NO EVENT WILL SANDISK OR ITS LICENSORS, OR THEIR RESPECTIVE DIRECTORS, OFFICERS, EMPLOYEES, CONSULTANTS, LICENSORS, LICENSEES OR AFFILIATES, BE LIABLE FOR ANY INDIRECT, INCIDENTAL, SPECIAL, CONSEQUENTIAL, OR EXEMPLARY DAMAGES, ARISING OUT OF OR IN CONNECTION WITH THE DOWNLOAD, USE OR PERFORMANCE OR NON-PERFORMANCE OF THE SOFTWARE. THE FOREGOING LIMITATIONS OF LIABILITY SHALL APPLY NOTWITHSTANDING ANY FAILURE OF ANY REMEDY PROVIDED FOR HEREUNDER IN ITS ESSENTIAL PURPOSE. IN NO EVENT WILL SANDISK'S OR ITS LICENSORS' TOTAL LIABILITY TO YOU EXCEED THE AMOUNT YOU PAID TO US FOR THE USE OF THE SOFTWARE.

The Software is provided with "RESTRICTED RIGHTS." Use, duplication or disclosure by the Government is subject to restrictions as set forth in FAR 52.227-14 and DFARS 252.227-7013 et seq. Use of the Software by the Government constitutes acknowledgement of SanDisk's proprietary rights therein. Contractor or Manufacturer is SanDisk Corporation, 601 McCarthy Boulevard, Milpitas, California 95035.

Termination. We may terminate this Agreement and the license if you violate this Agreement at any time. Upon termination of this Agreement, you must delete or destroy all copies of the Software.

High Risk Activities. The Software is not fault-tolerant and is not designed or intended for use in hazardous environments requiring fail-safe performance, or any other application in which the failure of the Software could lead directly to death, personal injury, or severe physical or property damage (collectively, "High Risk Activities"). SANDISK DISCLAIMS ANY EXPRESS OR IMPLIED WARRANTY OF FITNESS FOR HIGH RISK ACTIVITIES AND SHALL NOT BE LIABLE FOR ANY LIABILITIES OR DAMAGES ARISING FROM SUCH USE.

General. This Agreement contains the entire understanding between the parties with respect to your use of the Software. If any part of this Agreement is found void and unenforceable, it will not affect the validity of the balance of this Agreement, which shall remain valid and enforceable according to its terms. This Agreement is governed by and construed under the laws of the State of California and the Federal laws of the United States of America without regard to conflicts of laws provisions thereof. The U.N. Convention on Contracts for the International Sale of Goods shall not apply to this Agreement. Any action or proceeding arising from or relating to this Agreement shall be adjudicated in the state or federal courts of Santa Clara County, California, and the parties hereby agree to the exclusive jurisdiction and venue of such courts. You will not remove or export from the United States or re-export from anywhere any part of the Software or any direct product thereof to any country in violation of U.S. Export Administration Regulations, or a successor thereto, or otherwise except in compliance with and with all licenses and approvals required under applicable export laws and regulations including, without limitation, those of the U.S. Department of Commerce. Any waivers or amendments of this Agreement shall be effective only if made in writing and signed by an authorized representative of

each party. The provisions of Sections 3, 4, 5, 6, 7 and 8 shall survive the termination or expiration of this Agreement.

FCC Regulation

This device complies with part 15 of the FCC Rules. Operation is subject to the following two conditions:

- 1) This device may not cause harmful interference, and
- 2) This device must accept any interference received, including interference that may cause undesired operation.

This equipment has been tested and found to comply with the limits for a Class B digital device, pursuant to Part 15 of the FCC Rules. These limits are designed to provide reasonable protection against harmful interference in a residential installation. This equipment generates, uses, and can radiate radio frequency energy and, if not installed and used in accordance with the instructions, may cause harmful interference to radio communications. However, there is no guarantee that interference will not occur in a particular installation. If this equipment does cause interference to radio or television reception, which can be determined by turning the equipment off and then on, the user is encouraged to try to correct the interference by one or more of the following measures:

- 1) Increase the separation between the equipment and receiver.
- 2) Correct the equipment to a different outlet so that the equipment and receiver are on different branch circuits.
- 3) Consult the dealer or an experienced radio / TV technician for help.

Important – Safety Hearing Level Info

YOU MUST READ THIS BEFORE USING YOUR SANSAS MP3 PLAYER

Congratulations on the purchase of your Sansa® media player!

Your media player is equipped with a variety of features. To help you maximize your listening pleasure, SanDisk would like to advise you that it is important to use your headphones with your media player at a safe hearing level.

- Exposure or repeated exposure for an extended period of time to music and other sounds that are too loud can cause damage to your hearing resulting in temporary or even permanent “noise induced hearing loss”.
- Symptoms of hearing loss increase gradually with prolonged exposure at high levels of loudness.
- Initially, you may not even be aware of the loss unless detected with a hearing test.

HEARING LEVELS

To help you understand what may be considered a safe hearing level, the following examples are included for your reference.

Examples of Typical Approximate Sound level:

- Sound Levels in Decibels (dB)*
- Refrigerator humming 40
- Normal conversation 60
- City traffic 80
- Motorcycles and lawnmowers 90#
- Rock concerts 110-120#
- Firearms 120-140#

* A decibel (dB) is a unit of relative measurement of the strength of sound wave. In decibels (dB), a measured signal level doubles with every additional 3 dB.

These sound decibel levels are considered harmful under extended exposure.

Information courtesy of the National Institute of Deafness & Other Communication Disorders (NIDCD)

<http://www.nidcd.nih.gov/health/hearing/noise.asp>

FOR YOUR SAFETY!

- Your hearing may adapt to higher volumes of sound. In order to prevent any harmful impact to your hearing, you must control the sound emanating from your headphones and set the media player volume to a low setting where you can hear it clearly and comfortably.
- Studies, including one from NIDCD indicate that sounds of less than 80 decibels, even after long exposure, are unlikely to cause a hearing loss.
- Listen to your media player at such a level that you can still hear conversation and other people in your environment without shouting when you attempt to converse.
- It can also be dangerous to play your music with headphones/earphones at high volume while walking, or engaged in other activities. You should exercise extreme caution and discontinue use in potentially hazardous situations.

Do not use headphones/earphones while driving, cycling, or operating any motorized vehicle. This may create a traffic hazard and may be illegal in some areas.